

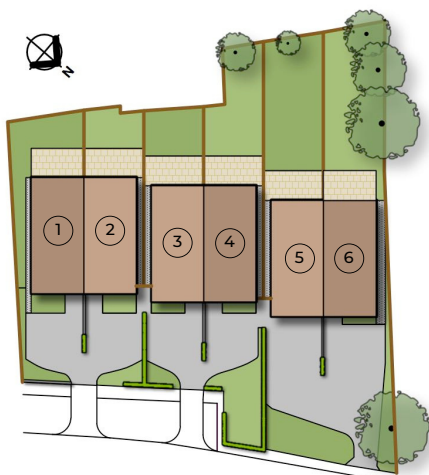


ABOUT THE DEVELOPMENT

Henderson Homes are excited to announce the arrival of Dale View, our landmark new development on Telegraph Road, Heswall, which is set to offer residents a luxurious living experience. This eye-catching scheme features six stunning semi-detached houses designed and built to the highest standards.

One of the standout features of these new homes is the breath-taking views over the estuary, a sight to behold in every season. With expansive windows and balconies to the rear, residents can enjoy the stunning natural beauty of the area from the comfort of their own home. Each house boasts five spacious bedrooms, providing ample room for growing families or hosting guests.

The open-plan kitchen, living and dining area is the heart of these homes and is designed to meet the needs of modern-day living. The kitchen comes equipped with top-of-the-range appliances, ample counter space and storage, and is perfect for both preparing and enjoying meals.



The living and dining offering is an impressive space, allowing for plenty of natural light, making it the ideal area for family gatherings, entertaining or just relaxing. Each house also benefits from a separate lounge offering a cosy alternative to the heart of the home.

Heswall is an immensely desirable place to live, with a vibrant feel, excellent schools, a fantastic variety of independent shops, bars and restaurants as well a few familiar names such as Tesco, M&S and much more. The town allows for easy access to the stunning Wirral countryside. The area has a rich history and culture, with plenty to explore and immerse yourself in.

With a focus on attention to detail and quality, residents can expect to move into their new homes with all the modern amenities and features that they need for a comfortable and luxurious lifestyle. Overall, Dale View is set to offer residents an exceptional living experience with breath-taking views, spacious homes and easy access to all the amenities that the area has to offer.





FLOORPLANS AND DIMENSIONS



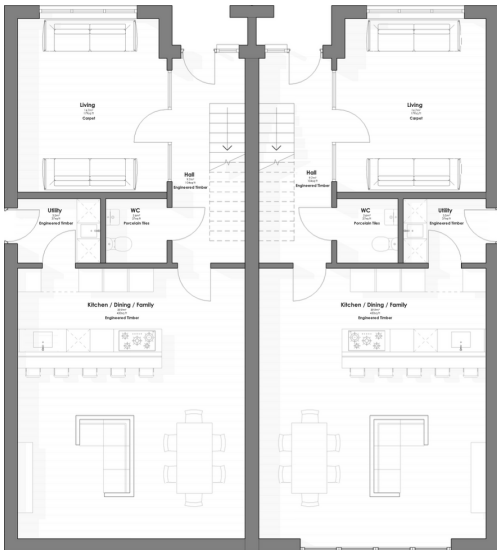
4-5 BDRM



3 BATH

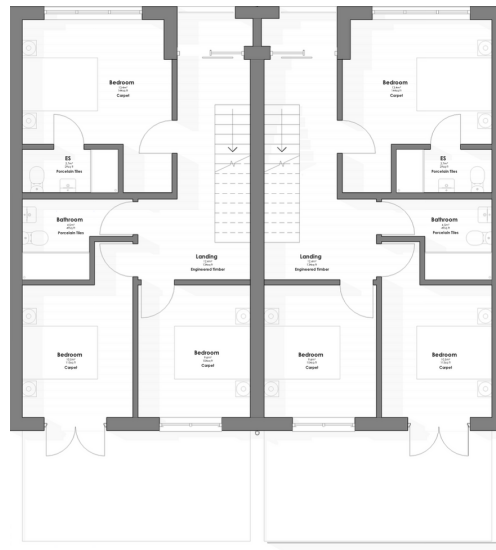


2300 SQFT



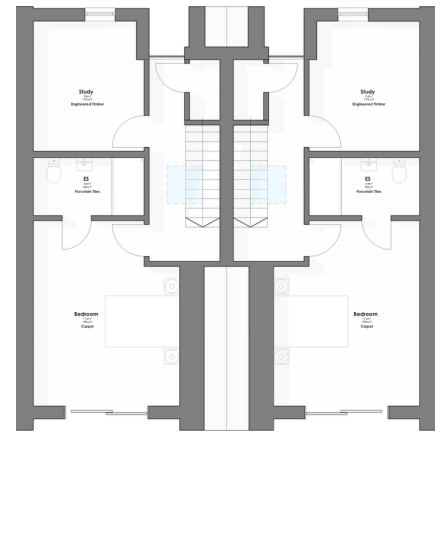
GROUND FLOOR

Living 4.4m x 3.8m
 Kitchen, Dining, Family 6.9m x 5.8m
 WC 1.6m x 1.5m
 Utility 2.1m x 1.6m



FIRST FLOOR

Bedroom 2 3.8m x 3.2m
 En Suite 1.1m x 2.2m
 Bedroom 3 3.4m x 2.8m
 Bedroom 4 3.4m x 2.8m
 Bathroom 2.1m x 2.8m



SECOND FLOOR

Bedroom 1 4.9m x 3.8m
 En suite 2.9m x 1.5m
 Study 3.4m x 4.9m



HENDERSON HOMES
EST 1953

Tel: 01565 832786
 Email: sales@hendersonhomes.co.uk
www.hendersonhomes.co.uk

Henderson Homes is an award-winning Cheshire based family homebuilder established in 1953. Every home is built to traditional high standards of quality craftsmanship whilst utilising modern materials chosen for their aesthetics, sustainability and energy efficiency.

Disclaimer - All dimensions are taken from structure not plastered finish. Dimensions may not reflect that constructed on site. All dimensions may be subject to change and are not to be relied upon for contractual purposes. Whilst every effort is made to provide customers with an accurate and comprehensive description of the properties under construction, we are only able to provide plans, dimensions and details of the specification that are accurate at the time of going to press. Please, therefore, view the contents of this brochure as being for guidance only and appreciate that as a development progresses some changes may be come necessary. This brochure does not constitute a contract or warranty and Henderson Homes reserves the right to make changes as it sees fit without notice. Unless otherwise stated, images used in this brochure have been provided to offer a guide and are for illustrative purposes only. **Important Notice** - Henderson Homes operates to a strict Health and Safety policy. No admittance will be given to unauthorised visitors. To view a development please make an appointment by calling head office on 01565 832786.