

# LATITUDE





Set amongst the pine-fringed trees of Alderley Edge, LATITUDE is designed to read as a graphically simple composition of slender white horizontal lines, framing full-height glass and bronze finished elements that quietly animate the elevations with rhythm and pattern. The goal of the design was to create a ground breaking luxurious family home providing just under 5,000sqft of considered contemporary styled accommodation. The sense of place is strong and expressed in a series of intimate relationships with the surrounding gardens whilst enjoying the brilliance of Northern light.













Bright and pared-back interior finishes allow inhabitants to focus on furniture, artwork and the views outside



Spaces can be styled to facilitate effortless living













Immaculately finished living spaces provide a blank canvas for individual creative expression



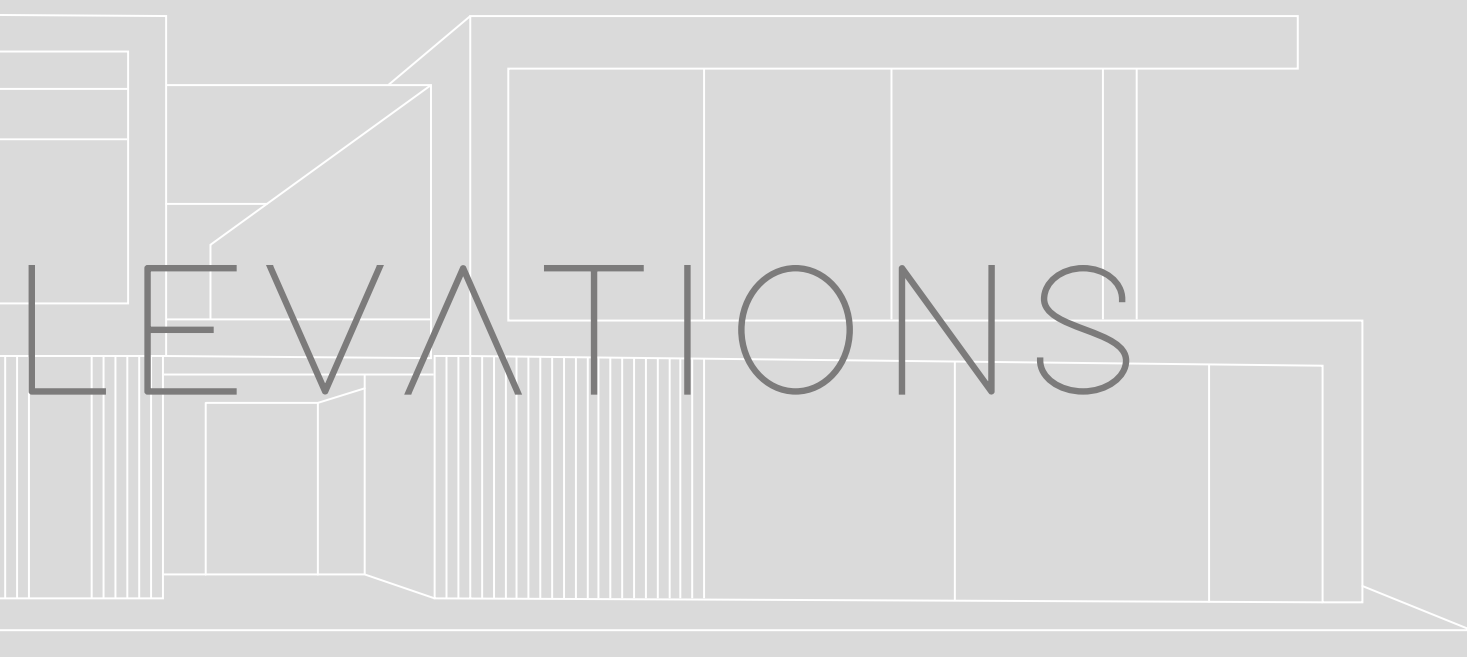


Its not just a home, it is a sanctuary in which to escape the confines of a busy world

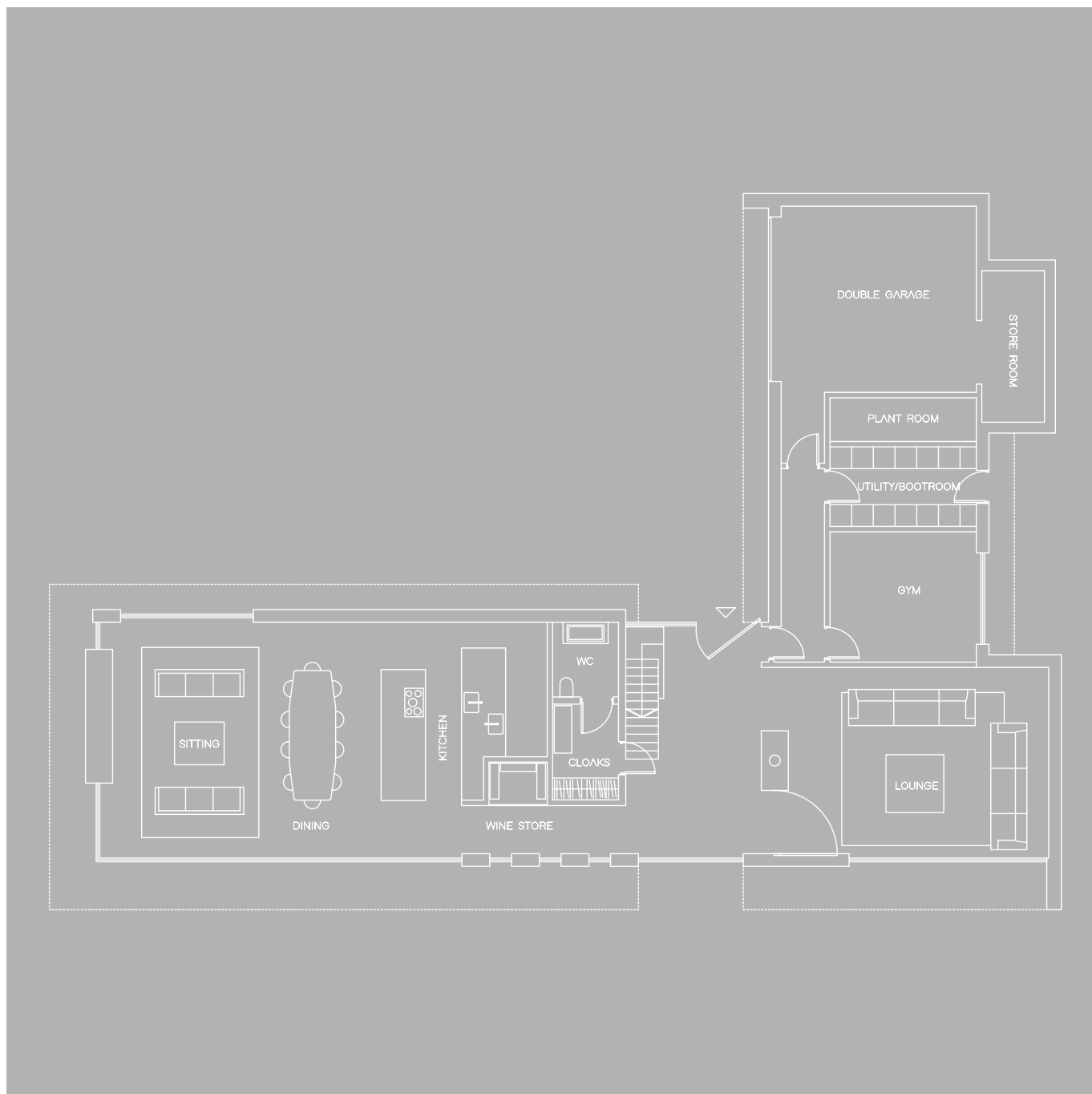
An abstract architectural line drawing in white on a gray background. It features a series of horizontal and vertical lines that create a sense of depth and structure, resembling a modern building facade or a series of stacked planes. The lines are thin and precise, with some areas showing a grid-like pattern and others showing more open, angular spaces.

# PLANS & E





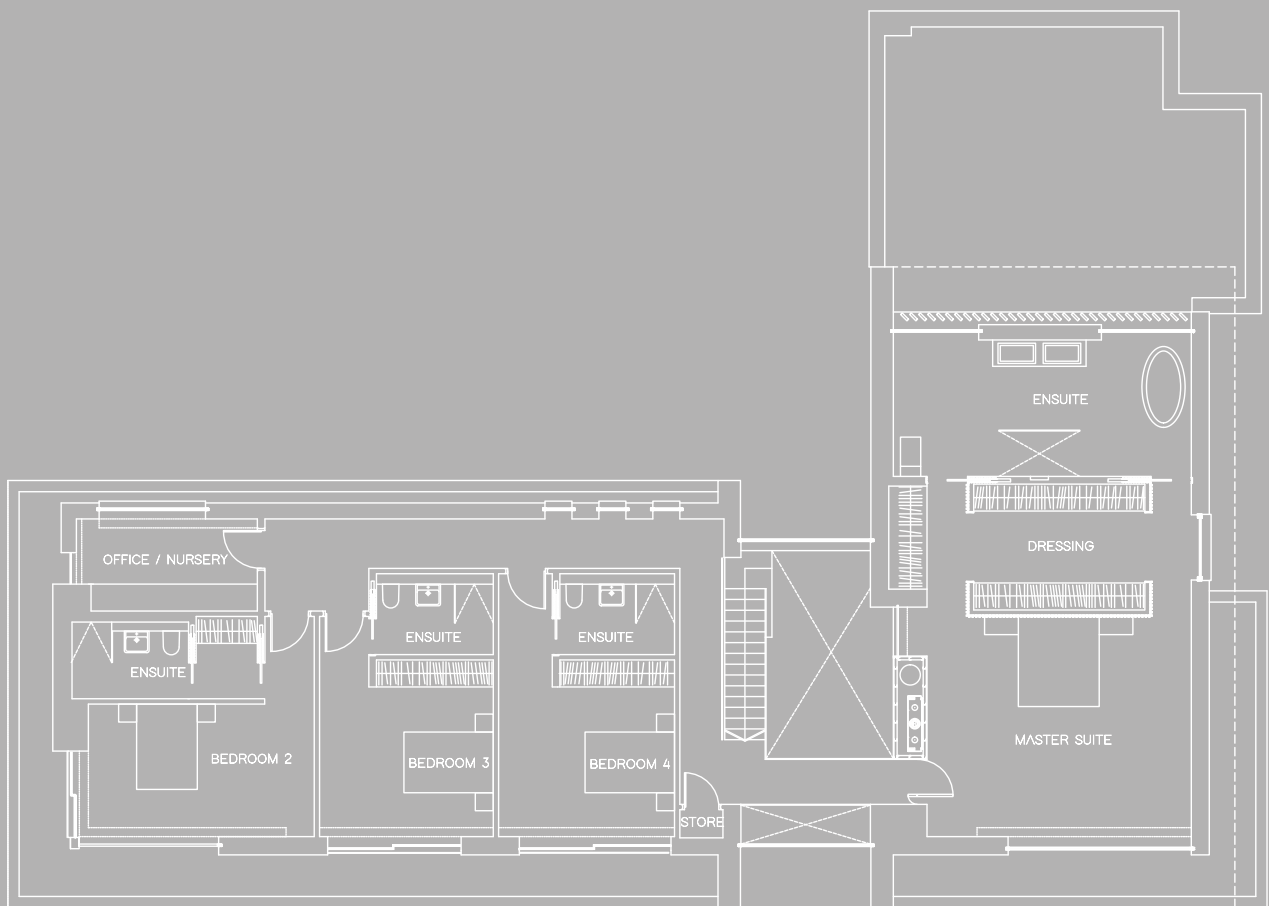
LEVATIONS



## GROUND FLOOR

Sitting/Dining/Kitchen	12300mm x 6500mm
WC	1900mm x 2100mm
Cloaks	2800mm x 1900mm
Wine Store	1600mm x 1100mm
Lounge	7100mm x 5100mm
Gym	4000mm x 3600mm
Utility/Boot Room	4100mm x 2200mm
Plant Room	4200mm x 1300mm
Store Room	1900mm x 4200mm
Double Garage	5500mm x 5300mm





#### FIRST FLOOR

Master Bedroom	5900mm x 5150mm
Master Dressing	6900mm x 2800mm
Master Ensuite	6700mm x 3500mm
Office/Nursery	4050mm x 2300mm
Bedroom 2	5300mm x 3150mm
Bedroom 2 Dressing	1400mm x 1850mm
Bedroom 2 Ensuite	2600mm x 1650mm
Bedroom 3	3900mm x 4100mm
Bedroom 3 Ensuite	2600mm x 1600mm
Bedroom 4	3950mm x 4100mm
Bedroom 4 Ensuite	2600mm x 1600mm



DEVELOPER: Henderson Homes  
ARCHITECT: theCAVE architecture+design  
DESIGN & ART DIRECTION: Mark McGrath  
STRUCTURAL ENGINEER: Brennan Consult  
LANDSCAPE ARCHITECT: Matt Nichol  
CGI: Virtual CGI

Disclaimer: Plans, dimensions and specification are provided as a guide only. As a development progresses some changes may become necessary. This brochure does not constitute a contract or warranty and Henderson Homes reserves the right to make changes as it sees fit without notice. Unless otherwise stated, imagery used in this brochure is for illustrative purposes only.